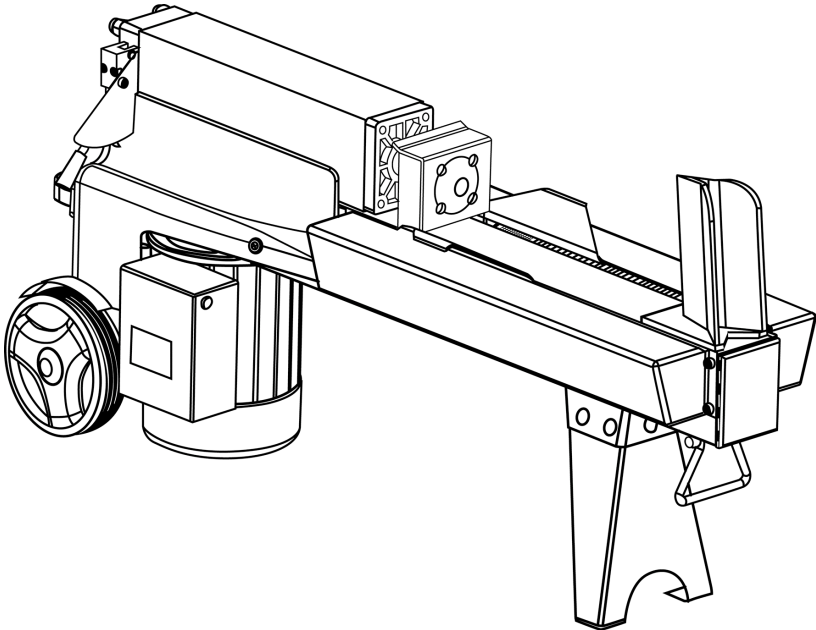


# 5-TON LOG SPLITTER

## OWNER'S MANUAL



**⚠ WARNING:** Read carefully and understand **RULES FOR SAFE OPERATION** and instructions before operating. Failure to follow the safety rules and other basic safety precautions may result in serious personal injury.

**Item #334842**

## READ ALL INSTRUCTIONS BEFORE OPERATING.

Before attempting to operate your new Log Splitter please read the instructions thoroughly. You will need these instructions for the safety warnings, precautions, assembly, operation, maintenance, parts list and diagrams.

**⚠ WARNING:** The warnings, cautions and instructions discussed in this manual cannot cover all possible conditions or situations that could occur. It must be understood by the operator that common sense and caution are factors, which cannot be built into this product, but must be supplied by the operator.

## SPECIFICATIONS

Force: ..... 5 Tons  
Operation: ..... Horizontal  
HP: ..... 1 3/4 HP  
Voltage: ..... 120V  
Current: ..... 15 Amps  
Oil Capacity: ..... 0.6 Gallon  
Tire Size: ..... 5 3/4" Diameter  
Log Capacity: ..... 20 1/2" L x 10" Diameter  
Cylinder: ..... 16 3/4" L x 2 1/3" W  
Cycle Time: ..... 9 seconds forward/5 seconds return

## SAVE THESE INSTRUCTIONS.

## SAFETY RULES

**⚠ WARNING:** The double-insulated system is intended to protect the user from shock resulting from a break in the tool's internal wiring. Observe all normal safety precautions related to avoiding electric shock.

1. Know your machine. Read this manual carefully. Learn the machine's applications and limitations, as well as specific hazards.
2. Ground all machines. This machine is *Double Insulated*, meaning that all outside metal parts are insulated from

electrical power. Double Insulated tools are equipped with a polarized plug. This plug will fit in a polarized outlet only one way. If the plug does not fit fully in the outlet, reverse the plug. If it still does not fit, contact a qualified electrician to install a polarized outlet. Do not attempt to circumvent this safety feature.

3. Do not expose the tool to moisture. Don't use this machinery in damp or wet locations and keep it out of the rain.
4. Keep the work area clean. Cluttered areas invite injuries.
5. Keep children and pets away. All children should be kept away from the work area. Never let a child handle a tool without strict adult supervision.
6. Do not operate this tool if under the influence of alcohol or drugs or if you are tired. Read warning labels on prescriptions to determine if your judgment or reflexes are impaired while taking the medication. If there is any doubt, do not attempt to operate.
7. Use safety equipment. Eye protection should be worn at all times when operating this machine. Use ANSI approved safety glasses. Everyday eyeglasses only have impact resistance lenses. They are NOT safety glasses. A dust mask, respirator, non-skid safety shoes, a hard hat, or hearing protection must be used in appropriate conditions.
8. Wear the proper apparel. Loose clothing, gloves, neckties, rings, bracelets, or other jewelry may present a potential hazard when operating this machine. Please keep all apparel clear of the machine.
9. Don't overreach. Keep proper footing and balance at all times when operating this product.
10. Always disconnect the machine from the power source before servicing or changing the accessories.
11. Check for damage. Check your tool regularly. If any part of the tool is damaged it should be carefully inspected to make sure it can perform its intended function correctly. If in doubt, the part should be repaired. Refer all service to a qualified technician. Consult your dealer for advice.
12. Keep away from flammables. Do not attempt to operate this tool near flammables or combustibles. Failure to comply may cause serious injury or death.

13. Do not start the log splitter while a log is on the work table. Always turn the splitter on BEFORE placing a log to be split on the work table.
14. Always check to make sure that the switch is not engaged before plugging in power cord.
15. Keep your hands clear of the cutting edges and all moving parts. Do not place hands between log and splitting wedge, or between the log and push rod during operation.
16. Protect others in the work area from debris such as chips and sparks. Provide barriers and shields as needed.
  
17. Use the right tool for the job. Do not use a tool or attachment to do a job for which it was not intended. Do not alter a tool.
18. Use only authentic accessories. Using noncompliant accessories may be hazardous. Be sure that all accessories are properly installed and maintained.
19. Remove all adjusting keys and wrenches. Make a habit of checking that the adjusting keys and wrenches are removed from the tool before turning it on.
20. Guard against electric shock. Prevent body contact with grounded surfaces such as pipes, radiators, ranges, and refrigerators. Hold your tool by the insulated, non-metal grasping surfaces. Use a Ground Fault Circuit Interrupter (GFCI) to reduce shock hazards.
21. Avoid accidental starting. Be sure your tool is turned off before plugging it in. Do not use a tool if the power switch does not turn the tool on and off. Do not carry a plugged-in tool with your finger on the switch.
22. Do not force the tool. Your tool will perform better when used appropriately. Excessive force only causes operator fatigue, increased wear and reduced control.
23. Do not abuse the cord. Never carry your tool by its cord or unplug it by pulling the cord from the outlet. Pull the plug rather than the cord to reduce the risk of damage. Keep the cord away from heat, oil, sharp objects, cutting edges and moving parts.
24. Treat your tools with care. Keep handles dry, clean and free from oil and grease. Follow the instructions for lubricating and changing accessories. Periodically inspect

- tool cords and extension cords for damage. Refer all service to a qualified technician.
25. Store idle tools. When not in use, store your tools in a dry, secure place. Keep out of reach of children.
  26. If an extension cord is needed, it must be 121 AWG and 3-wire type.
  27. Split only one log at a time.
  28. Make sure the log is free of nails or other foreign objects.
  29. Never use the log splitter for any other purpose other than splitting wood.
  30. Never attempt to load a log while the push rod is in motion.
  31. When loading a log, place hands on the sides of the log, not on the ends.
  32. Wait for the push rod to stop moving before loading another log onto the splitter.
  33. High pressure and temperatures can be produced in this log splitter. Never place your hand(s) near a hydraulic leak, or use your hands to check for leaks. Use a piece of cardboard or stiff paper to check for leaks in the hydraulic lines.

**⚠WARNING:** Do not use the Log Splitter in wet or damp areas or expose it to rain.

**⚠WARNING:** Do not use it in areas where fumes from paint, solvents or flammable liquids pose a potential hazard.

### **INSPECT YOUR LOG SPLITTER**

Check your Log Splitter before turning it on. Keep Guards in place and in working order. Make a habit out of checking to see that keys and adjusting wrenches are removed from tool area before turning it on. Replace damaged, missing or failed parts before using it.

### **INSPECT THE LOGS**

Make sure there are no nails or foreign objects in the logs to be split. The ends of the logs must be cut square. Branches must be cut off so that they are flush with the trunk.

### **DON'T OVERREACH**

Never stand on the Log Splitter. Serious injury could occur if the tool is tipped or if the wedge is unintentionally contacted. Do not store anything above or near the Log Splitter where someone might stand on the tool.

### **AVOID INJURY FROM UNEXPECTED ACCIDENTS**

Always pay full attention to the movement of the Log Push Rod.

**⚠CAUTION:** Do not attempt to load the log on until the Log Push Rod has stopped.

**⚠CAUTION:** Keep your hands out of the way of all moving parts.

### **PROTECT YOUR HANDS**

Keep your hands away from splits and cracks which open in the log. They may close suddenly and cause serious bodily injury.

**⚠CAUTION:** Do not remove jammed logs with your hands.

Don't leave the Log Splitter until it has come to a complete stop, is turned off and unplugged.

### **MAINTAIN YOUR LOG SPLITTER WITH CARE**

Keep the Log Splitter clean for safe and efficient performance.

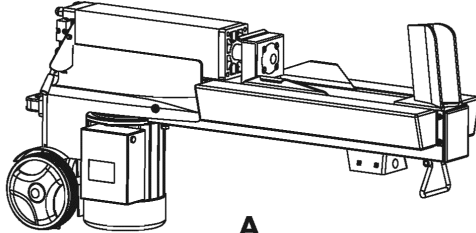
## **APPLICATION CONDITIONS**

This Log Splitter is designed for home use. It is built to operate best at temperatures between 41°F and 104°F. The surrounding humidity should be less than 50% at 104°F. It should be stored or transported at temperatures between -13°F and 131°F.

**⚠NOTE:** A small log can be difficult to split when it has knots or a particularly tough fiber. On the other hand, it may not be difficult to split logs with regular fibers even if its diameter exceeds the maximum diameter specifications.

## CONTENTS OF THE SHIPPING CONTAINER

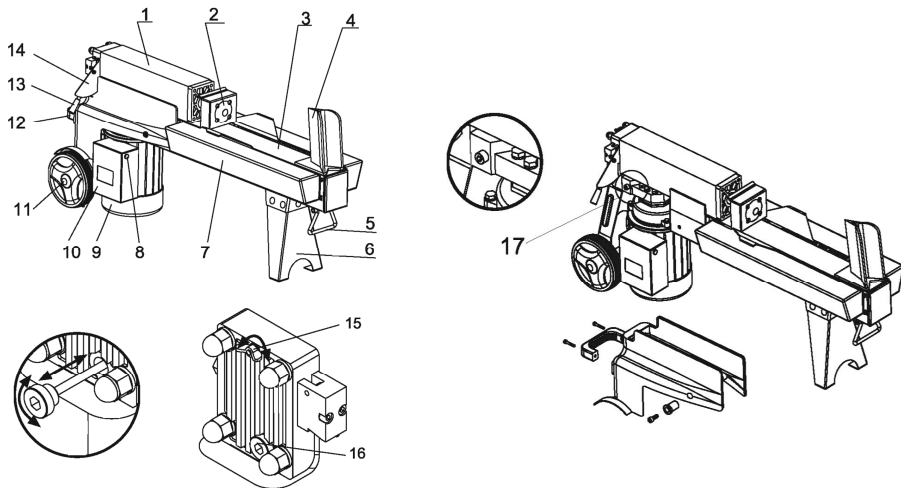
- A. Log Splitter .....1 Set
- B. Support Leg .....1 pc.
- C. Owner's Manual .....1 pc.
- D. Loose Part Bag Containing M8 Bolts & Nuts .....5 Sets



## SET UP AND PREPARATION

Familiarize yourself with the controls and features of this Log Splitter in the illustrations.

1. Oil Tank
2. Log Pusher
3. Work Table
4. Wedge
5. Lift Handle
6. Support Leg
7. Work Table Extension w/Retaining Plates
8. Switch
9. Motor
10. Pushbutton Box
11. Moving Wheels
12. Lift Handle
13. Hydraulic Control Lever
14. Control Lever Guard
15. Bleed Screw
16. Oil Drain Bolt w/Dipstick
17. Max Pressure Limiting Screw



- Before operating the Log Splitter, the Bleed Screw should be loosened until air goes in and out of the Oil Tank smoothly.
- Airflow through the Bleed Screw Hole should be detectable during operations.
- Before moving the Log Splitter, make sure the Bleed Screw is tightened to avoid Oil leaks.

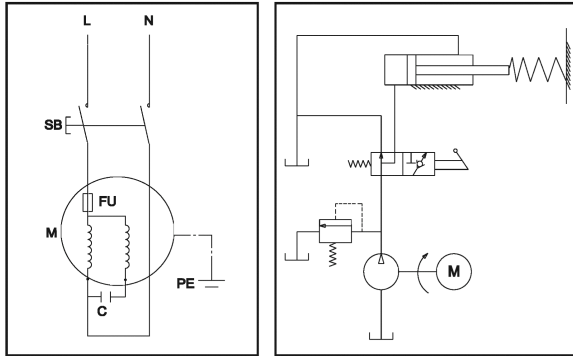
**⚠WARNING:** Failure to loosen the Bleed Screw will keep the air in the Hydraulic System compressed after being decompressed. Continuous compression and decompression will blow out seals on the Hydraulic System and cause permanent damage to the Log Splitter.

**⚠WARNING:** DO NOT ADJUST THE MAX PRESSURE LIMITING SCREW! The Max Pressure Limiting Screw is sealed with glue to ensure that the Log Splitter works under no more than 5 tons of pressure. The setting was done by qualified mechanics with professional instruments. Unauthorized resetting will cause the Hydraulic Pump to fail to output enough splitting pressure and could RESULT IN SERIOUS INJURY AS WELL AS DAMAGE TO THE MACHINE.

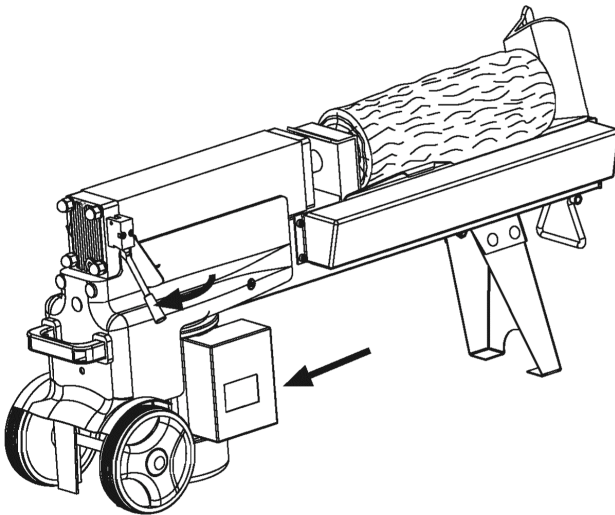
**WIRING DIAGRAM**

**PLUMBING DIAGRAM**





## OPERATION

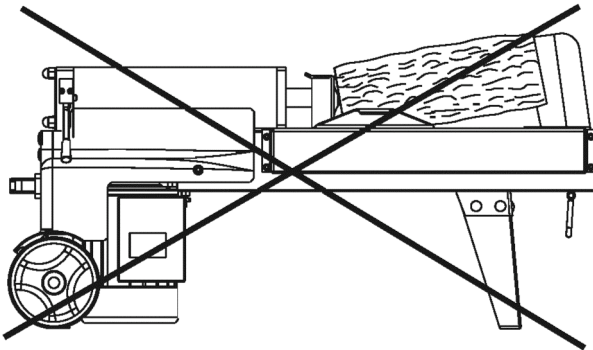


1. This Log Splitter is equipped with a *ZHB* Control System that requires it to be operated with both hands (the left hand controls the Hydraulic Control Lever while right hand controls the Pushbutton Switch). The Log Splitter will freeze when either hand is absent. Only after both hands release the controls, will the Log Pusher return to the starting position.

**⚠WARNING:** Never force the Log Splitter for more than 5 seconds.

2. After a 5-second interval, the Oil under pressure will overheat and the machine could be damaged. For an extremely hard log, rotate the log by 90° to see whether it can be split in a different direction. If you are not able to split the log, its hardness exceeds the capacity of the machine and thus that log should be discarded to protect the Log Splitter from damage.
3. Always set the log firmly on the Retaining Plates and Work Table. Make sure the ends of the log are square, so the log does not twist, rock or slip while being split. Do not force the blade by splitting the log using only the upper part of the blade. This could break the blade or damage the machine.

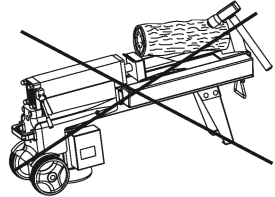
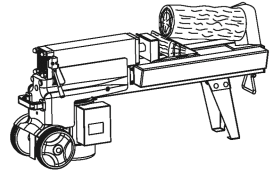
**⚠WARNING:** Break the log in the direction of its growing grain. Do not place the log across the Log Splitter. This is dangerous and may seriously damage the machine.



**⚠WARNING:** Do not attempt to split two logs at the same time. One of them may fly up and hit you.

## FREEING A JAMMED LOG

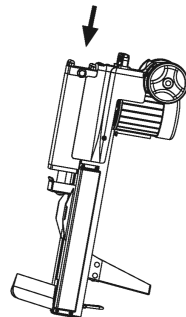
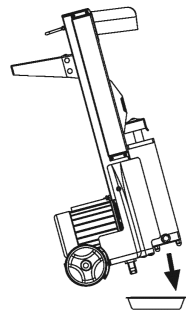
- Release both controls.
- After the Log Pusher moves back and comes to a complete stop at the starting position, insert a wedge wood under the jammed log.
- Start the Log Splitter and push the wedge wood completely under the jammed log.
- Repeat the above procedure with a sharper sloped wedge wood until the log is completely freed.
- Do not try to knock the jammed log off. This could damage the machine or launch the log.



## REPLACING HYDRAULIC OIL

Replace the Hydraulic Oil in the Log Splitter after every 150 hours of use. Take the following steps.

- Make sure that all the moving parts have stopped and the Log Splitter is unplugged.
- Unscrew the Oil Drain Bolt and remove it.
- Turn the Log Splitter over on to the Support Leg to drain the Hydraulic Oil.
- Turn the Log Splitter over on to the Motor side and refill with fresh Hydraulic Oil according to the capacity of the particular model.
- Clean the surface of Dipstick on the Oil Drain Bolt and put it back into the Oil Tank while keeping the Log Splitter vertical.
- Make sure the level of the Oil is between the two grooves on the Dipstick.
- Clean the Oil Drain Bolt before



rethreading. Make sure it is tightened to avoid leakage before returning the Log Splitter to a horizontal position.

**⚠NOTE:** Check the Oil level periodically to ensure it is between the two grooves on the Dipstick. Refill when low.

The following Hydraulic Oils are recommend for this Transmission:

SHELL Tellus 22

MOBIL DTE 11

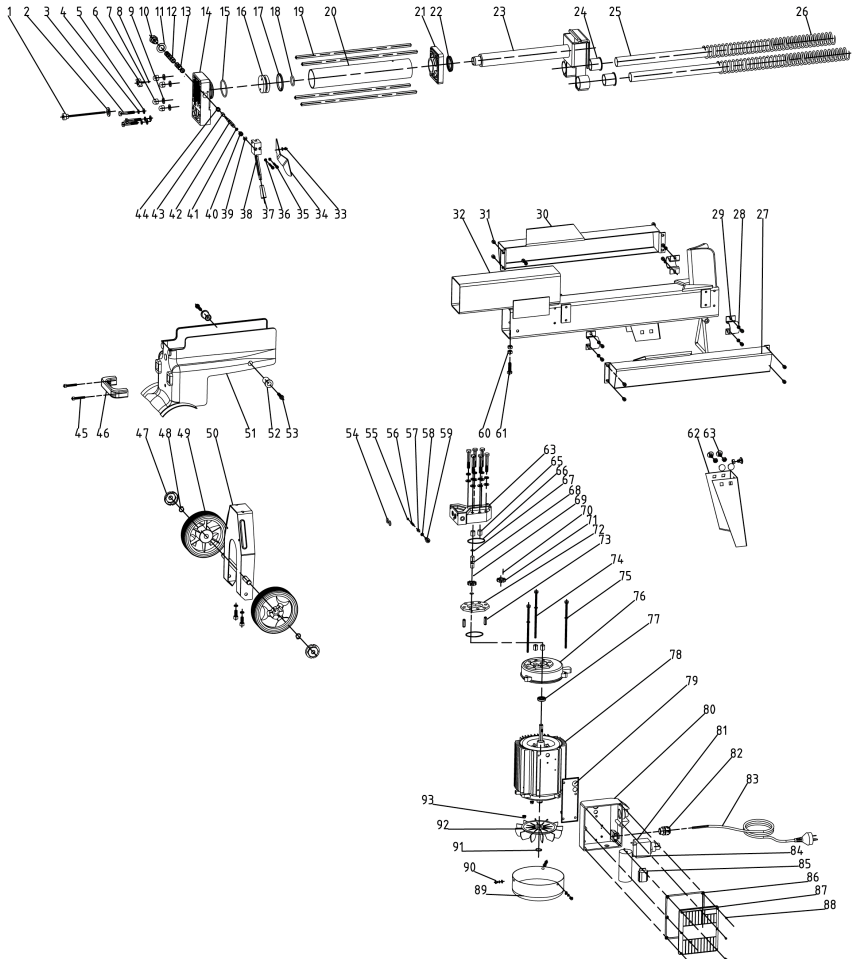
ARAL Vitam GF 22

BP Energol HLP-HM 22

## **SHARPENING WEDGE**

After using the Log Splitter for some time, sharpen the wedge of the Log Splitter using a fine-toothed file and smooth any burrs or crushed areas along the cutting edge.

# PARTS DIAGRAM



# PARTS LIST

NO.	Drawing	Part NO.	NAME	MATERIAL	Q' Ty
1	A4	CAA. 55. 010	Dipstick		1
2		JB 982-77	wahser groupware		1
3		GB/T 5782-2000	Bolt	35	9
4		GB/T93-1987	Spring Washer	65Mn	11
5		GB/T 95-1985	Washer	Q235	9
6	A4	CAA. 55. 141	Bolt	35	1
7		GB/T 923-1988	Nut Cap	35	4
8		GB 1235-76	Spring		1
9	A4	CBA. 55. 154	Copper Gasket		4
10	A4	CAA. 55. 112	Nut Plug	45	1
11		JB 982-77	wahser groupware		1
12	A4	CBA. 55. 115	Valve Sleeve	GCr15	1
13		GB 1235-76	Spring		5
14	A4	CAA. 55. 101	Alumium Cover ( Rear )	ZL108	1
15		GB 1235-76	Spring		1
16	A4	CAA. 55. 103	Piston	ZL108	1
17		GB/T 15242. 1-1994	Piston Ring		1
18		GB/T 3452. 1-1992	Spring		1
19	A4	CAA. 55. 102	Stud	45	4
20	A4	CAA. 55. 105	Hydraulic Cylinder		1
21	A4	CAA. 55. 106	Alumium Cover ( Front)	ZL108	1
22		GB/T 10708. 3-1989	Piston Rod Seal		1
23	A4	CAA. 55. 012	Log Pusher		1
24	A4	CAA. 55. 108	Lead Set	PA66	2
25	A4	CAA. 55. 110	Lead Tube	Q235	2
26	A4	CAA. 55. 109	Spring	65Mn	2
27	A3	CAA. 38. 012	Right Cover		1
28		GB/T93-1987	Spring Washer	65Mn	8
29	A4	CAA. 55. 111	Hold Firm Clip	Q235	4
30	A3	CAA. 38. 013	Left Cover		1
31		GB/T 70. 1-2000	Screw	35	16
32	A3	CAA. 38. 011	Frame Tube		1
33		GB/T 818-2000	Screw	35	1
34	A4	CAA. 55. 121	Guard Plate	Q235	1
35		GB/T 70. 1-2000	Screw	35	2
36		GB/T93-1987	Spring Washer	65Mn	3
37	A4	CAA. 55. 120	Lever Knob	ABS	1
38	A4	CAA. 55. 015	Lever		1
39		GB 896-1986	Snap Washer - Shaft	65Mn	1
40	A4	CBA. 55. 113	Valve Retract Spring	65Mn	1
41		GB 1235-76	Spring		1
42	A4	CBA. 55. 114	Valve Core Rod	GCr15	1
43	A4	CBA. 55. 116	Sliding Pressure Sensor Sleeve	GCr15	1
44	A4	CBA. 55. 117	Sliding Pressure Sensor Sleeve Spring	65Mn	1
45		GB/T 70. 1-2000	Screw	35	2
46	A4	CBA. 55. 110	Lift Handle	ABS	1
47	A4	CBA. 38. 124	Wheel cover		2
48		GB/T 894. 1-1986	Block turn	65Mn	2
49	A4	CBA. 38. 014	Wheel		2
50	A4	CAA. 38. 014	Wheel shelf		1

51 A0	CAA. 38. 102	Skin Cover	PVC	1
52		Skin Cover Additional	PVC	2
53	GB/T 70. 1-2000	Screw		4
54	GB/T 3452. 1-1992	Spring		2
55	GB 308-1989	Steel Ball		1
56 A4	CBA. 55. 122	Pressure Limited Valve Spring	65Mn	1
57	GB/T 77-1985	Adjusting Screw		1
58	GB 1235-76	Spring		1
59 A4	CBA. 55. 153	Screw	Q235	1
60	GB/T 6170-2000	Nut	S12	7
61	GB/T 5781-2000	Bolt	S12	1
62 A4	CAA. 38. 015	Leg		1
63	GB/T 12-1988	Bolt	35	5
64 A4	CAA. 26. 102	Gear Pump Cover		1
65 A4	CBA. 26. 103	Sliding Sleeve	SF-1	4
66	GB/T 3452. 1-1992	Spring		2
67	GB/T 895. 2-1986	Circlip	65Mn	2
68 A4	CBA. 26. 101	Gear Shaft	40Cr	1
69	GB 308-1989	Steel Ball		1
70	GB/T 119. 2-2000	Pin		1
71 A4	CBA. 26. 102	Gear		2
72 A4	CBA. 26. 107	Gear Housing Plate	HT250	1
73	GB/T 119. 2-2000	Pin		2
74	GB/T 5780-2000	Bolt	35	3
75	GB/T 95-1985	Washer	Q235	1
76 A4	CAA. 26. 109	Motor Cover	ZL108	1
77	GB 9877. 1-88	Seal		1
78		Motor		1
79		Waterproof underlay		1
80		Switch Box		1
81		Switch		1
82		prevent out		1
83	CBA. 78. 001	Cable & plug		1
84		Capacitor		1
85		Connection Terminal		1
86		Airproof underlay		1
87		Switch Box cover		1
88	GB/T 845-1985	Screw	35	11
89		Shroud	Q235	1
90	GB/T 818-2000	Screw	35	2
91	GB/T 894. 1-1986	Block turn	65Mn	1
92		Fan	ABS	1
93	GB/T 6170-2000	Nut	35	3

# **WARRANTY**

**One-year limited warranty**

Distributed by  
Northern Tool + Equipment Co., Inc.  
Burnsville, Minnesota 55306  
Made in China